

**INSTRUCTIONS TO CONVERT AN HP CP1025 OEM CARTRIDGE TO FIT AND USE IN HP  
MFP M176/MFP M177 PRINTER**

**OEM HP CP1025 CARTRIDGE  
(CE310A-CE313A)**



**T.P.E. CC1923 HP MFP M176/MFP M177  
CONVERSION KIT FOR OEM HP CP1025  
CARTRIDGES**



These instructions provide the necessary information to convert an OEM HP CP1025 cartridge to HP MFP M176/MFP M177 cartridge, by cutting the cartridge and using the T.P.E. CC1923 HP MFP M176/MFP M177 CONVERSION KIT FOR OEM HP CP1025 CARTRIDGES.

T.P.E. CC1923 HP MFP M176/MFP M177 CONVERSION KIT FOR OEM HP CP1025 CARTRIDGES includes the follows parts:

1. CC1918 HP MFP M176/MFP M177 RIGHT END CAP
2. CC1919 HP MFP M176/MFP M177 LEFT STABILIZER

**Procedures**

**Step 1**

Disassemble the OEM HP CP1025 Cartridge as standard procedure for remanufacturing

Unscrew the End Cap and Stabilizer and take out the Developer Roller, Developer Roller Bearings, Gears Set, Doctor Blade, Toner Adder Roller, Toner Adder Roller Foam Washers from the OEM HP CP1025 cartridge. Clean all the parts.

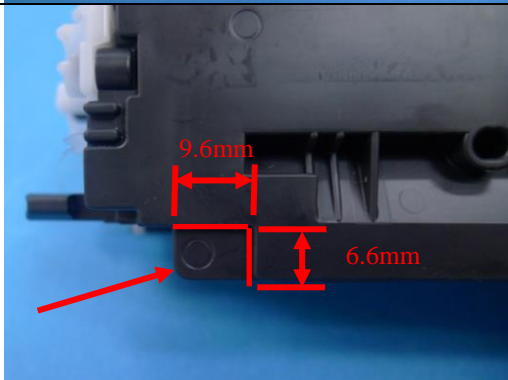


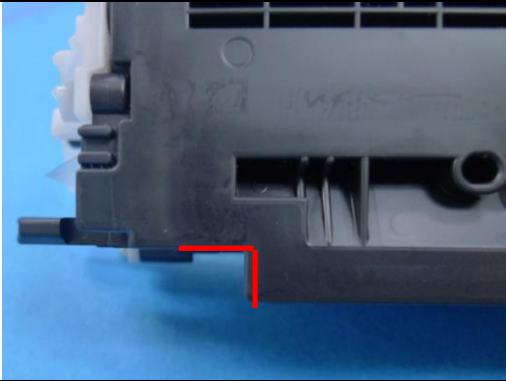
**Step 2**

The Toner Hopper needs to be modified and the same parts and changes are used for all the cartridges CE310A-CE313A.

Follow the edges to cut a small strip from the Left Side of the OEM HP CP1025 Toner Hopper, to the dimensions as shown in photo on the left.

\*\*If this small strip is not removed, then the cartridge will be prevented from fitting into the HP MFP M176/MFP M177 printer.





**Step 3**

Cutting away this strip has probably opened up the joint line of the hopper. Therefore it is essential to apply some polystyrene glue or solvent on the cut section to reseal the hopper as shown in the photo, to prevent toner leakage.



T.P.E. Left Stabilizer on the HP CP1025 cartridge



T.P.E. Right End Cap on the HP CP1025 cartridge

**Step 4**

Finish remanufacturing the cartridge in the normal way until you come to fitting the end cap and stabilizer.

Disregard the OEM Left Stabilizer and OEM Right End Cap of the HP CP1025. Replace them with the TPE Right End Cap and Left Stabilizer. Install the HP MFP M176/MFP M177 chip onto the toner hopper.

The conversion for changing an OEM HP CP1025 cartridge (CE310A - CE313A) to a cartridge that will fit the new HP MFP M176/MFP M177 is now complete.