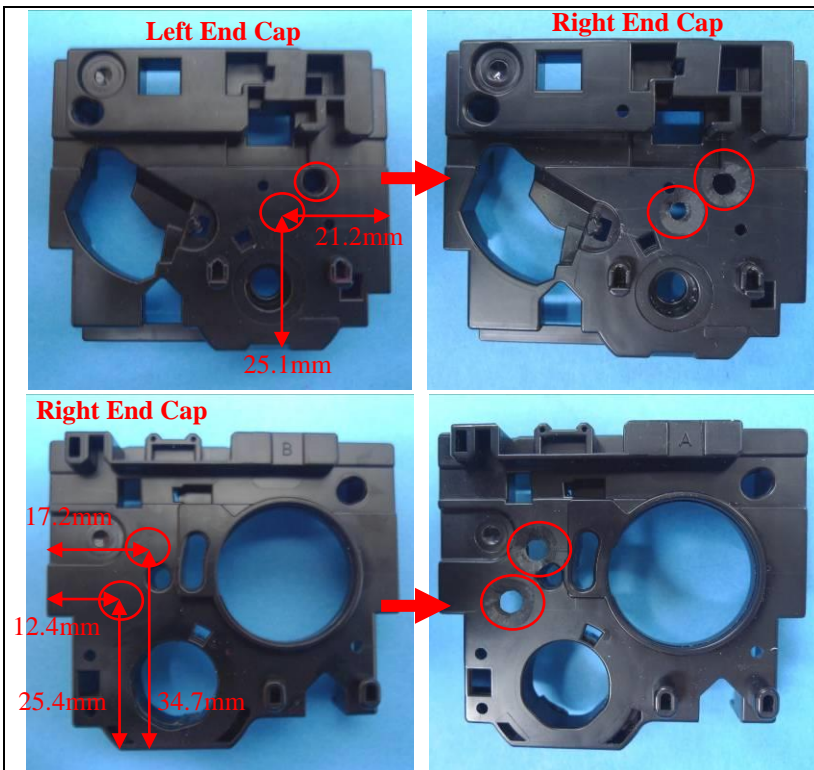


**How to Install the T.P.E. CC1990 HP M252/MFP M277 END CAPS FIXING KIT**

**CC1990 HP M252/MFP M277 END CAPS FIXING KIT**



**Procedures**

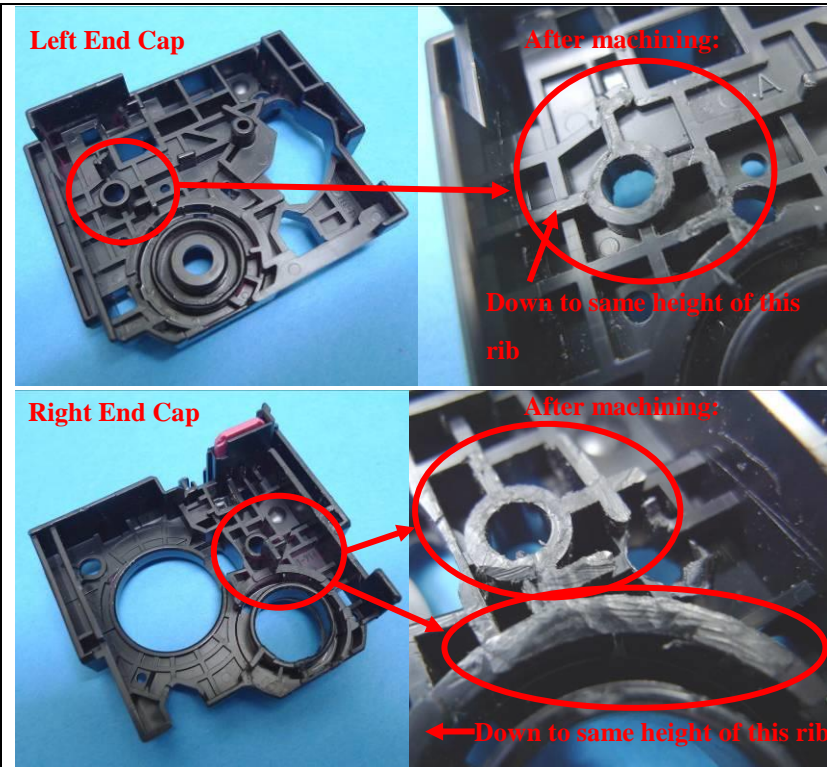


**Step 1**

Take off the OEM Left and Right End Caps from the HP M252/MFP M277 Cartridge.

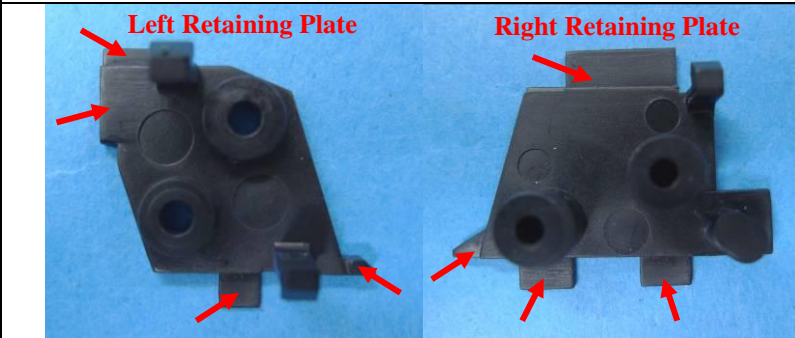
Drill two Diameter 3.8mm holes on each End Cap as circled on the photos.

Then chamfer the holes with a countersink drill on both Left and Right End Caps as shown on the photos.



**Step 2**

Machine off the protrusion on the back of both End Caps to the same height of the rib as pointed out on the photos. This is about 5.6mm above the plastic surface for Left End Cap and 7.7mm for Right End Cap.



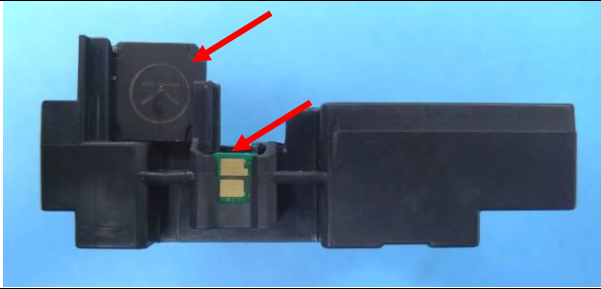
**Step 3**

Apply a solvent glue on the area of Retaining Plates of T.P.E. CC1990 END CAPS FIXING KIT as pointed out on the photos.



Stick the Retaining Plates on the Waste Toner Hopper as shown on the photos.

**\*Make sure all the snaps of the Retaining Plates are fitted into the Waste Toner Hopper properly.**



**Step 4**

Install the chips and color plate onto the Right End Cap.

**Step 5**

Assemble the machined OEM End Caps on the cartridge and then screw them in place with the supplied screws from T.P.E. CC1990 END CAPS FIXING KIT. Fit the OEM Spring after Left End Cap is screwed.

**Screw the Left End Cap on with two short screws.**

**Screw the Right End Cap on with two long screws.**

**Make sure that the short and long screws are only fitted to the specified End Cap as above.**

The conversion for HP M252/MFP M277 is now completed.

