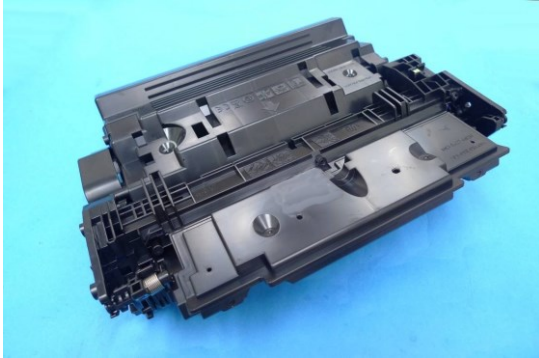


Installation Instructions for TPE CC2031CRS HP LASERJET ENTERPRISE M506/ MFP M527 ENLARGED TONER HOPPER (INCLUDED LEFT INNER END CAP AND RIGHT END CAP WITH GEARS)(WITH SEAL)

OEM HP M506/MFP M527 (CF287A or CF287X)

Cartridge



T.P.E. CC2031CRS HP LASERJET ENTERPRISE M506/ MFP M527 ENLARGED TONER HOPPER (INCLUDED LEFT INNER END CAP AND RIGHT END CAP WITH GEARS)(WITH SEAL)



T.P.E. CC2031CRS HP LASERJET ENTERPRISE M506/ MFP M527 ENLARGED TONER HOPPER (INCLUDED LEFT INNER END CAP AND RIGHT END CAP WITH GEARS)(WITH SEAL) includes the following:

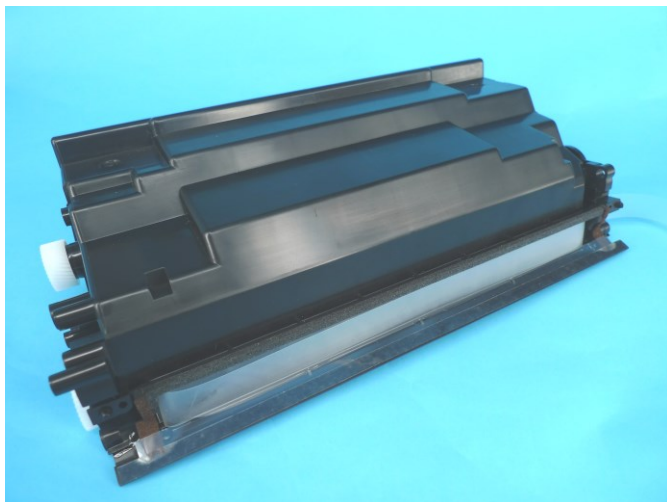
1. HP LASERJET ENTERPRISE M506/MFP M527 Toner Hopper. This includes an Agitator Bars, Agitator Gears, Toner Low Sensor Contact, Clear Seal and Exit Port Plug. All sealing foams and Mag Roller Sealing Blade are pre-installed.
2. Left Inner End Cap
3. Right End Cap
4. Gears Set
5. Contact Spring for Left Inner End Cap
6. Screws for Left Inner and Right End Cap
7. Filler Cap

If using an OEM HP LASERJET ENTERPRISE M506/ MFP M527 'X' Version cartridge (HP CF287X) as a core, you can still use the OEM 'X' Version Waste Toner Hopper with the T.P.E. CC2031CRS.

If using an OEM HP LASERJET ENTERPRISE M506/ MFP M527 'A' Version cartridge (HP CF287A) as a core, the OEM 'A' Version Waste Toner Hopper cannot carry all the waste toner from the CC2031CRS Enlarged Toner Hopper when it is fully filled. You would have to limit the fill weight to 520 grms. Alternatively you can replace the 'A' Version Waste Toner Hopper with T.P.E. CC2030 HP LASERJET ENTERPRISE M506/ MFP M527/LASERJET PRO M402/MFP M426 ENLARGED WASTE TONER HOPPER.

Conversion Procedures

Step 1

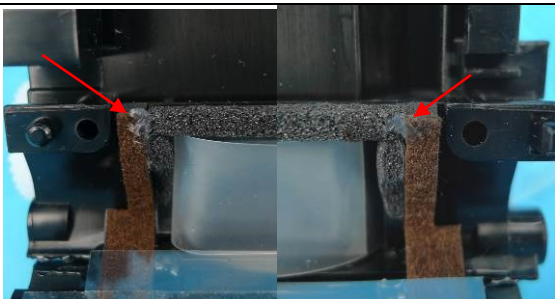



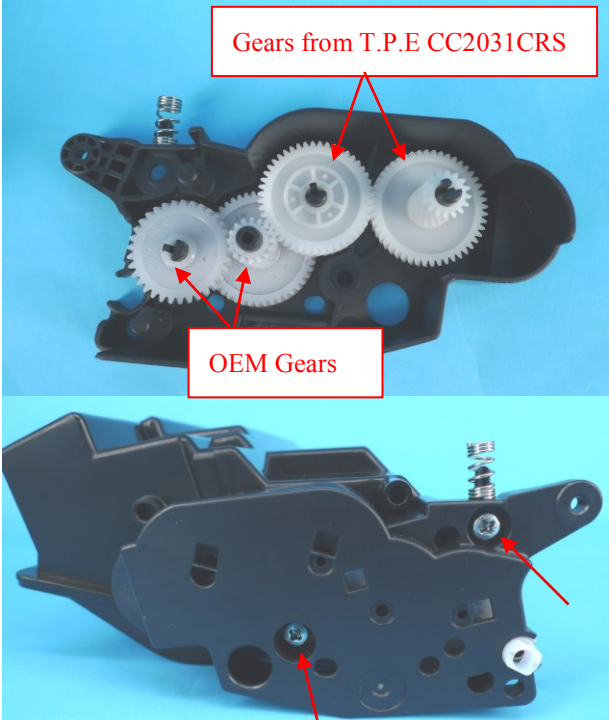


The photo shows a CC2031CRS HP LASERJET ENTERPRISE M506/ MFP M527 ENLARGED TONER HOPPER (INCLUDED LEFT INNER END CAP AND RIGHT END CAP WITH GEARS)(WITH SEAL). Fill hopper with toner and use the Filler Cap to seal the fill hole as shown.

You need to disassemble and use the following parts from the OEM Toner Hopper either from the 'A' or 'X' cartridge:--

- 1.Right Mag Roller Stabilizer
- 2.Outer Left End Cap
- 3.Mag Roller Drive Gear.
- 4.Gears Set
- 5.Mag Roller,
- 6.Mag Roller Bushing,
- 7.Doctor Blade

Carefully clean all components before re-using.

	<p><u>Step 2</u> Carefully place silicone glue on the Mag Roller End Felts and Doctor Blade Sealing Foam as shown in the photos.</p> <p><u>Important</u> **Make sure the silicone glue does not touch the Mag Roller.</p>
	<p><u>Step 3</u> Install the Doctor Blade onto the Hopper before the silicone glue has dried. This will make sure the silicone glue fills the space under between the doctor blade and sealing foams properly, as shown in the photos. Clean any excess glue after fitting the doctor blade.</p>
	<p><u>Step 4</u> Place the Left and Right Mag Roller Bushing on each end of the Mag Roller.</p> <p>Place the Mag Roller into the hopper.</p>
	<p><u>Step 5</u> Then install the Right Stabilizer Bearing on the Hopper.</p> <p>Then Place the Mag Roller Drive Gear on the right end of Mag Roller as shown in the photo.</p>
 <p style="color: red; border: 1px solid red; padding: 2px; display: inline-block;">Gears from T.P.E CC2031CRS</p> <p style="color: red; border: 1px solid red; padding: 2px; display: inline-block;">OEM Gears</p>	<p><u>Step 6</u> Install the OEM Gears Set and Gears Set which come with T.P.E. CC2031CRS on the Right End Cap as shown in the photo.</p> <p>Then install the Right End Cap to the Hopper. Use the screws which come with T.P.E. CC2031CRS to tighten the Right End Cap as shown in the Photo.</p>



Step 7

Separate the OEM Left End Cap into two parts – Left Outer End Cap and Left Inner End Cap.



Step 8

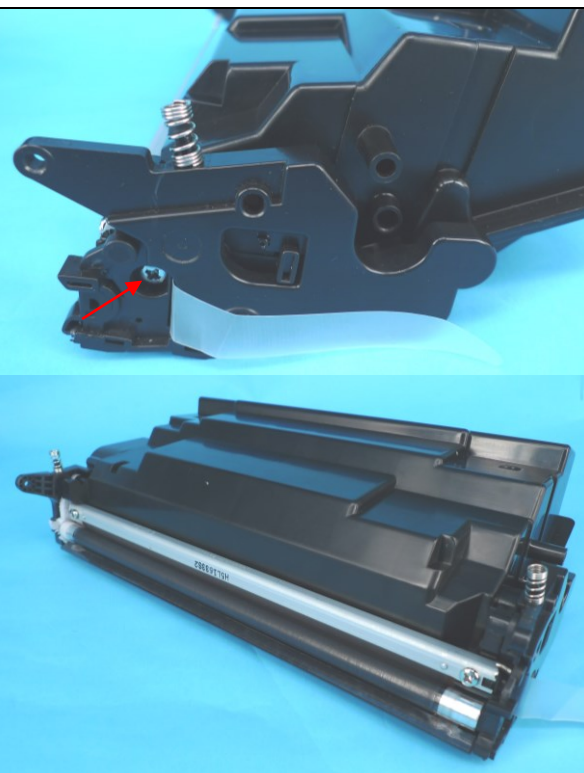
Then install the Left Inner End Cap which come with T.P.E. CC2031CRS to the OEM Left Outer End Cap.



Step 9

Install the spring which come with T.P.E. CC2031CRS on the Left Inner End Cap as shown in the photo.

Apply a small amount of conductive grease to the bass to fit with Mag Roller.



Step 10

Install the Left End Cap on the Hopper.

Use the screw which come with T.P.E. CC2031CRS to tighten Left End Cap as shown in the photo

Important

****Make sure the tail of the Clear Seal comes out from the slot on the Left Inner End Cap as shown in the photo**

Assembly of the Triton Hopper is now complete.

Finish Cartridge showing where the pull seal exits